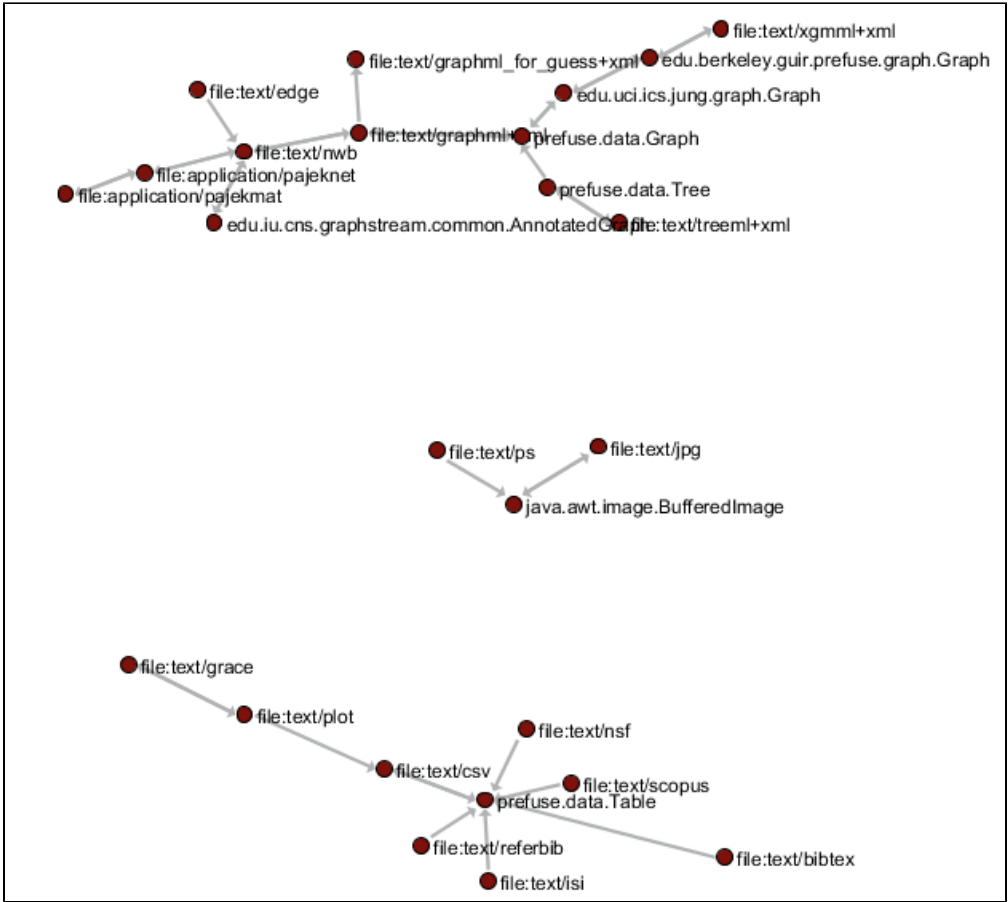
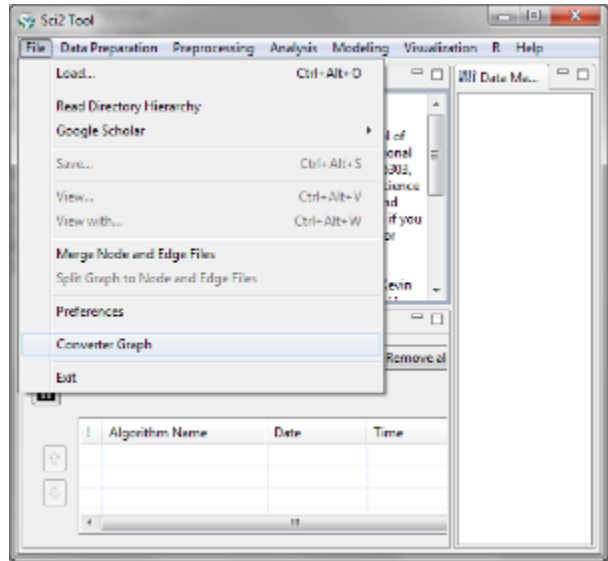


Supported Data Formats

The following is the converted graph generated by using CShell. The graph shows the available data formats supported by CShell. You can use the data id showed in the graph to define input and output data in the algorithm.properties file.



To generate the latest graph on your tool, select **File > Converter Graph** to generate the graph.



Then select **Visualization > Networks > GUESS** or **Visualization > Networks > Gephi** to see the visualization. You can use any layout to show the graph. The above image is generated by using **Visualization > Networks > GUESS** with **Layout > GEM**.

