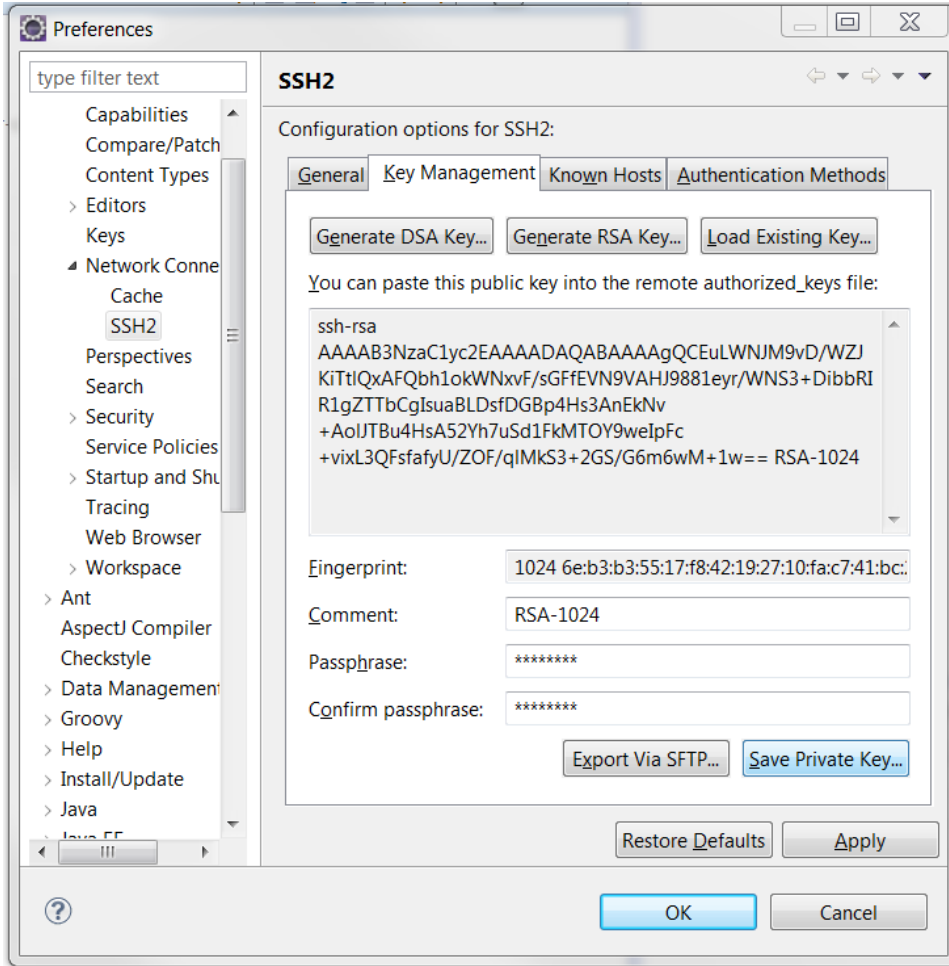
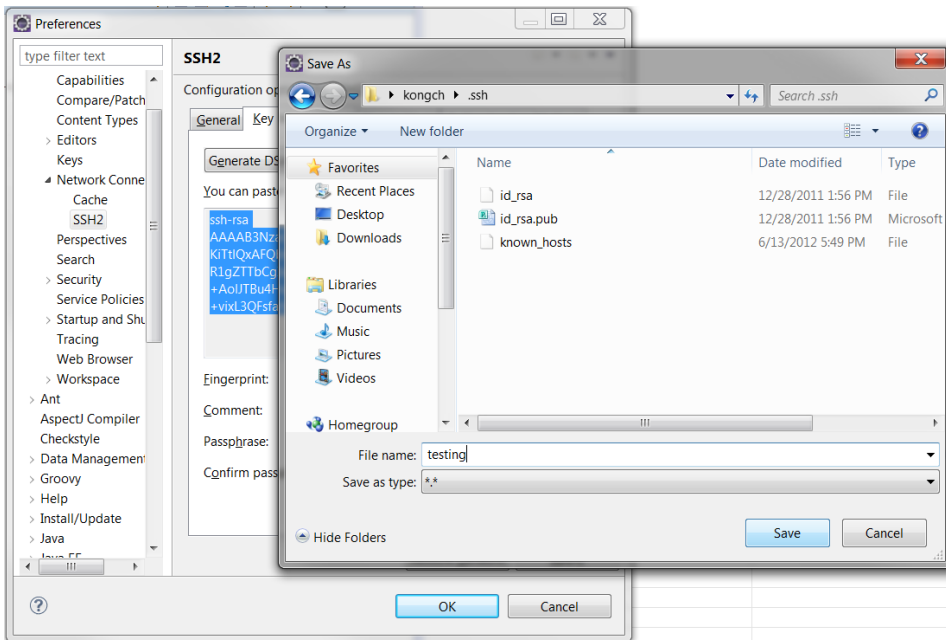


# Setup SSH on Eclipse and Git

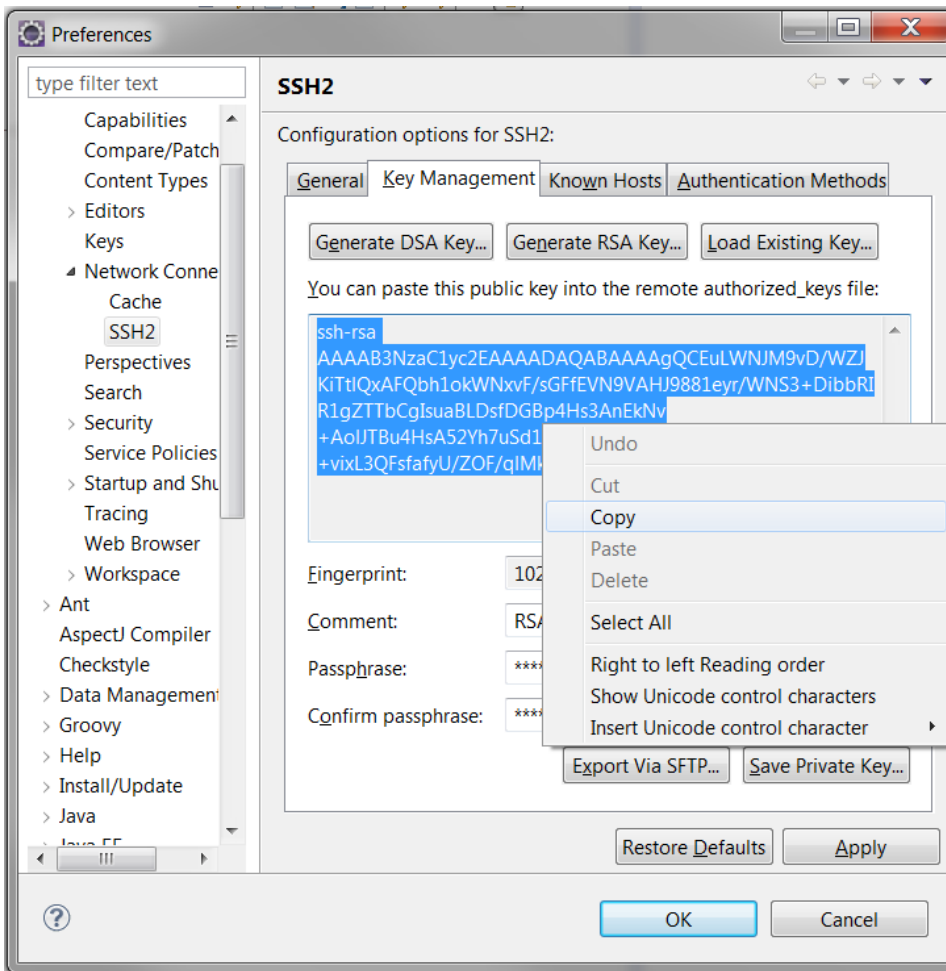
1. In Eclipse, go to **Windows > Preferences > General > Network Connection > SSH2 > Key Management**
2. Select **Generate RSA Key...** (You can also choose DSA Key. It is up for your own choice)



3. Insert passphrase for connection verification or leave it blank. For this example, I use 12345678
4. Select **Save Private Key...** (You can name anything you want.)



5. You can name it file as anything. I use "testing". Press Save and two files (testing and testing.pub) will be generated.
6. Copy the public key into your clipboard as show in the following image.



7. Now press **Apply**. It will be added to your Eclipse SSH2 private keys list.
8. You will need to save the public key to your GitHub account. Login to your GitHub account through browser. Select **Settings > SSH Keys > Add SSH key**

**kongch**

- Profile
- Account Settings
- Emails
- Notification Center
- Billing
- Payment History
- SSH Keys**
- Security History
- Applications
- Repositories
- Organizations

PRIVATE REPOS 0 OF 0

**CIShell**

Need help? Check out our guide to [generating SSH keys](#) or [troubleshoot common SSH Problems](#)

**SSH Keys** Add SSH key

[Redacted]	Delete
[Redacted]	Delete
[Redacted]	Delete

**Add an SSH Key**

Title

Key

```
ssh-rsa
AAAAB3NzaC1yc2EAAAADAQABAAQCEuLWNJM9vD/WZJKtIQxAFQbh1okWNVxF/sGFIEVN9VA
HJ9881eyr/WNS3+DibbRIR1qZTTbCalsuaBLDsfDGBp4Hs3AnEkN+AcLUTBu4HsA52Yh7uSd1FkMTOY9w
elpFc+vxL3QFsfafyU/ZOF/qIMkS3+2GS/G6m6wM+1w== RSA-1024
```

Add key

- Paste the copied public key from clipboard into the key field. Name the key title as you like. I named it **CIShell SSH Key Testing**
- Press Add key. and you are done with SSH key setup. Now you can clone your remote repository to local by using Eclipse.