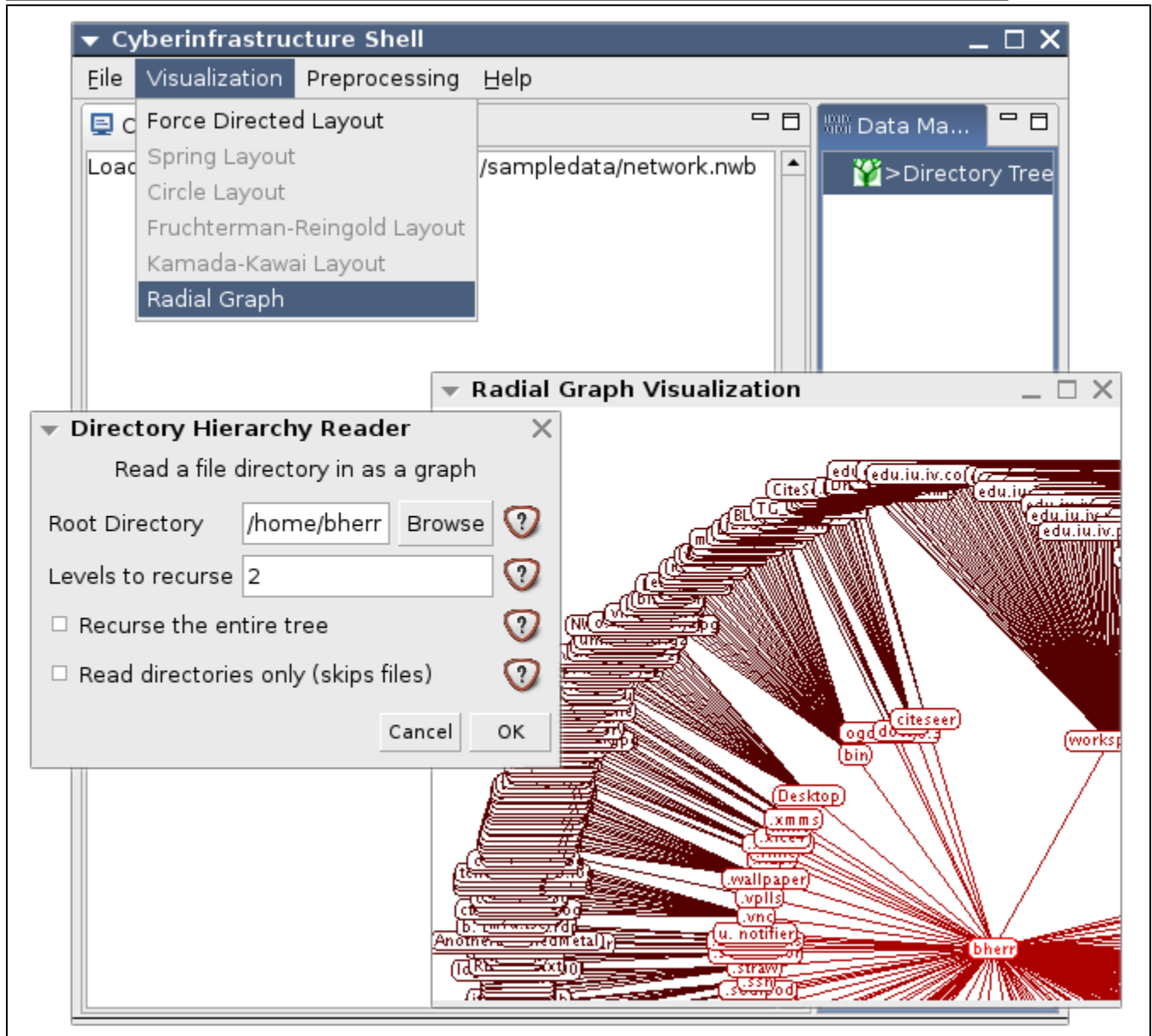
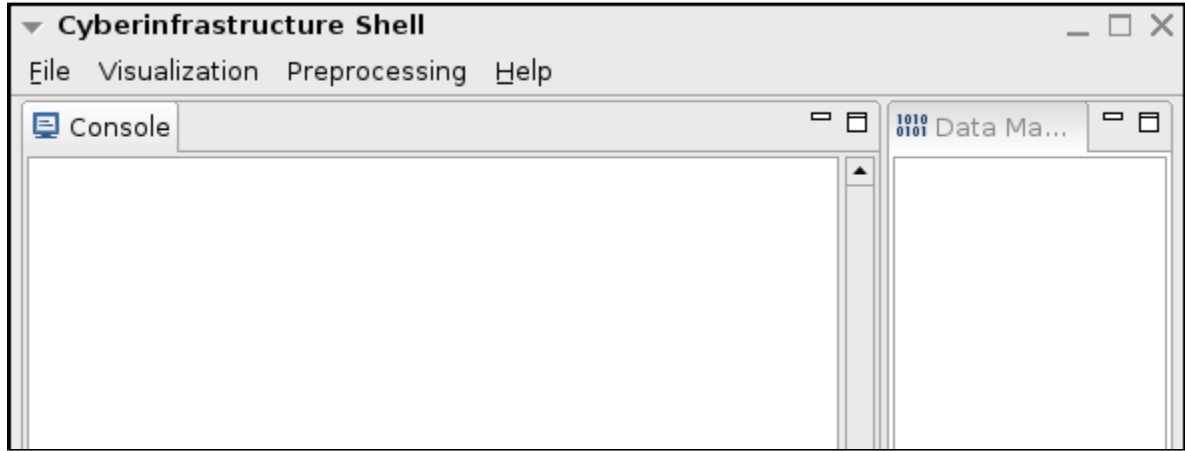
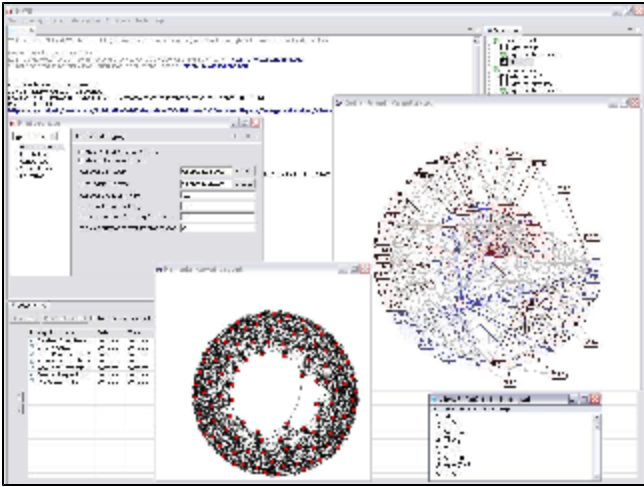


# CIShell Screenshots

The CIShell framework is GUI-independent, meaning that the CIShell core and CIShell algorithms do not need to rely on any one particular GUI. CIShell currently comes standard with an Eclipse-based Desktop GUI, which is shown below on Linux filled with a selection of algorithms from the Network Workbench CIShell-powered tool.





*Click thumbnail to see full screenshot*